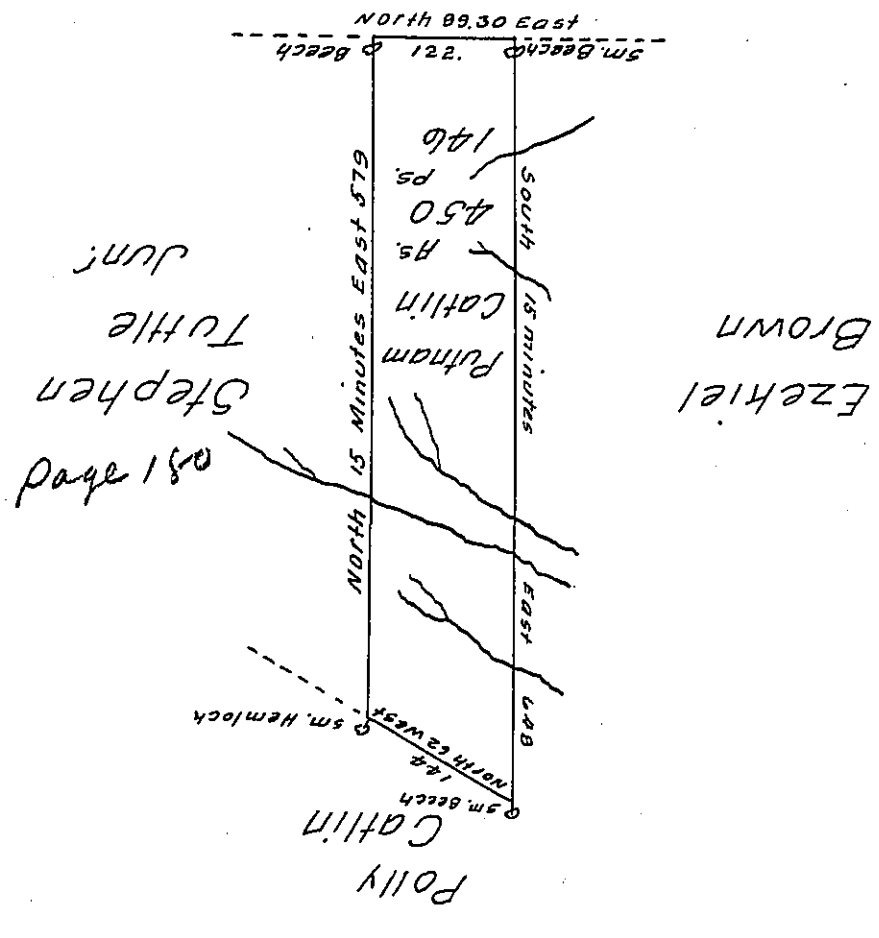


Land SURVEY for Capt. Norway



Draught of a Tract of Land called Catlinbury situate on the Waters of Wyalosing Creek in the County of Luzerne adjoining Land surveyed for Ezekiel Brown containing Four hundred and Fifty Acres and One hundred and Forty Six Perches and the usual Allowance of Six per Centum for Roads surveyed for Putnam Catlin the 13th Day of August 1804 in Pursuance of a Warrant dated the 12th Day of February 1793.

To Samuel Cochran Esq^r } Tho^s. Sambourne Dy. S^r
 Surveyor General.

IN TESTIMONY that the above is a copy of the original remaining on file in the Department of Internal Affairs of Pennsylvania, made conformably to an Act of Assembly approved the 16th day of February, 1833, I have hereunto set my Hand and caused the Seal of said Department to be affixed at Harrisburg, this twentieth day of November 1907.

Henry Howard
 Secretary of Internal Affairs.